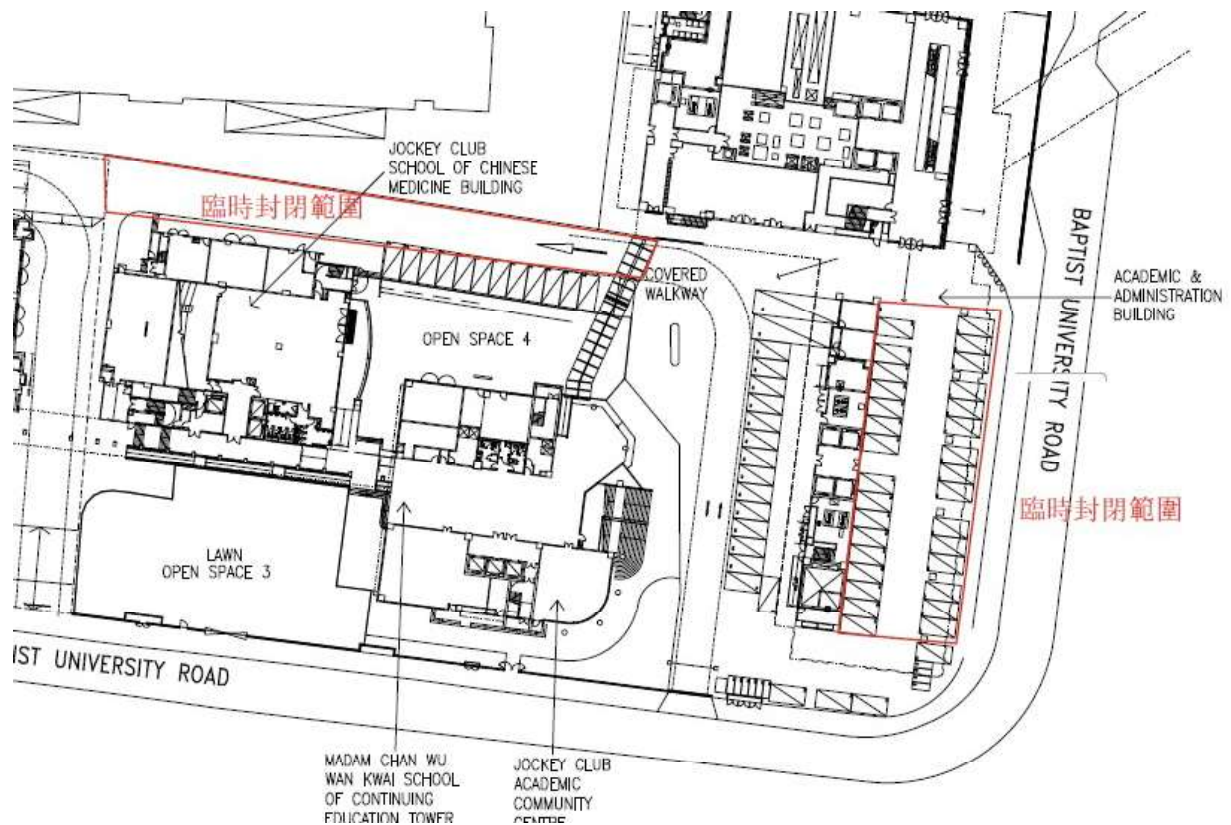


Baptist University Road Campus – Repair Works for Channel Cover at Car Park C of Academic and Administration Building

浸會大學道校園 – 教學及行政大樓地下停車場C維修排水渠蓋工程



1. 停車場C出口及內車場泊車位將會臨時封閉

The exit of Car Park C and the internal parking bays will be temporarily closed.

2. 封閉期間，請遵循保安同事泊車安排。

Please follow the instructions of the security staff regarding parking during the closure.