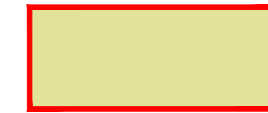


Shaw Campus – Renovation Works for History Gallery (Levels 2 and 3 of David C. Lam Building) and Connection of BU Bridge (Levels 4 and 5 of Shaw Tower)

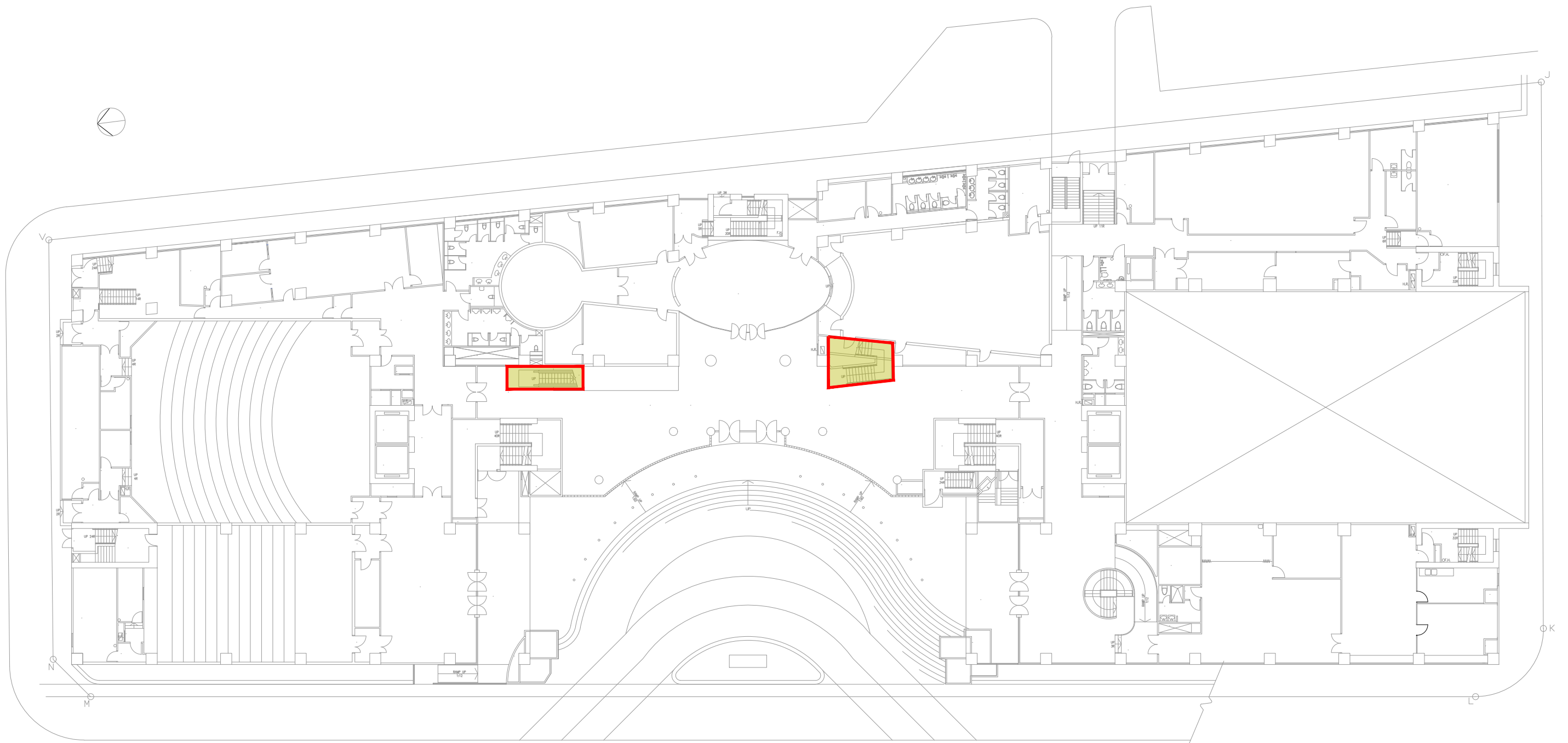
逸夫校園 - 校史展覽廳 (思齊樓二樓及三樓)及浸大橋與逸夫行政樓連接處 (逸夫行政樓四樓及五樓) 翻新工程

FROM 1 APRIL 2026 (WEDNESDAY) TO 31 AUGUST 2026 (MONDAY)
由二零二六年四月一號 (星期三) 至 二零二六年八月三十一號 (星期一)

LEGEND (圖例):



AFFECTED AREA (受工程影響範圍)





Level 1 Plan, David C. Lam Building (思齊樓一樓)

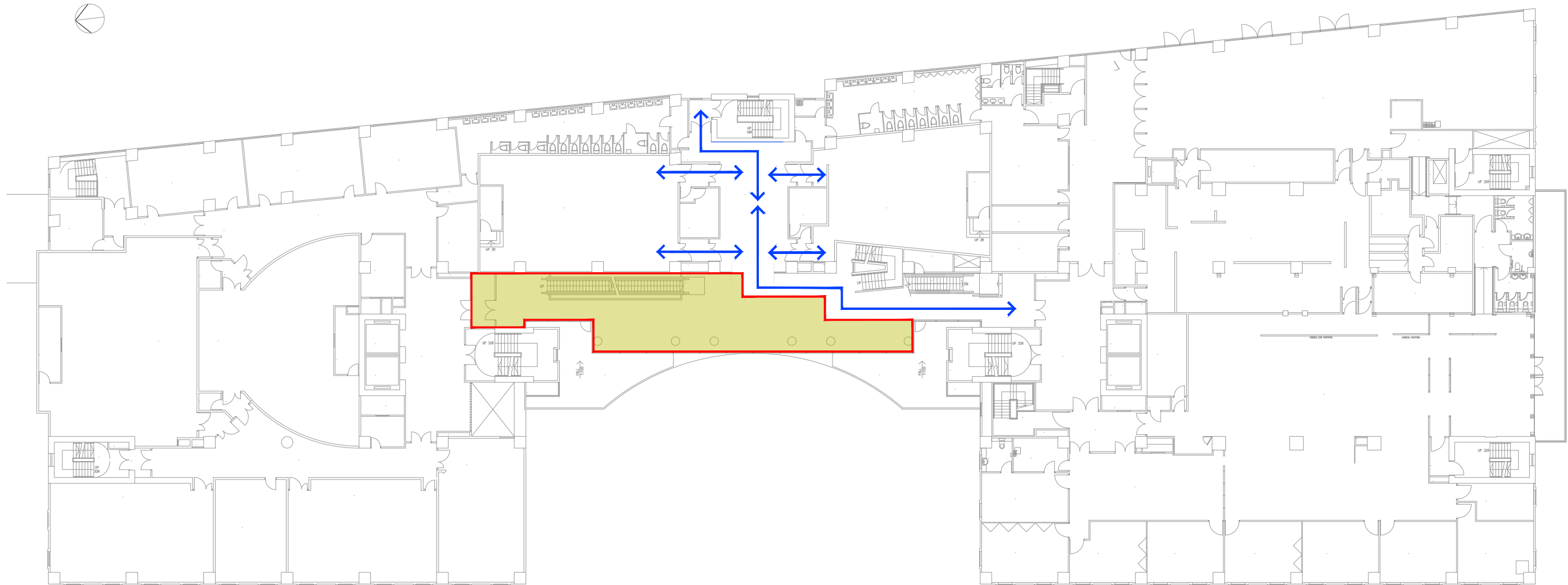
Shaw Campus – Renovation Works for History Gallery (Levels 2 and 3 of David C. Lam Building) and Connection of BU Bridge (Levels 4 and 5 of Shaw Tower)

逸夫校園 - 校史展覽廳 (思齊樓二樓及三樓)及浸大橋與逸夫行政樓連接處 (逸夫行政樓四樓及五樓) 翻新工程

FROM 1 APRIL 2026 (WEDNESDAY) TO 26 APRIL 2026 (SUNDAY)
由二零二六年四月一號 (星期三) 至 二零二六年四月二十六號 (星期日)

LEGEND (圖例):

-  AFFECTED AREA (受工程影響範圍)
-  EXIT ROUTE / PEDESTRIAN PATH (消防逃生路線 / 行人通道)



Level 2 Plan, David C. Lam Building (思齊樓二樓)

Shaw Campus – Renovation Works for History Gallery (Levels 2 and 3 of David C. Lam Building) and Connection of BU Bridge (Levels 4 and 5 of Shaw Tower)

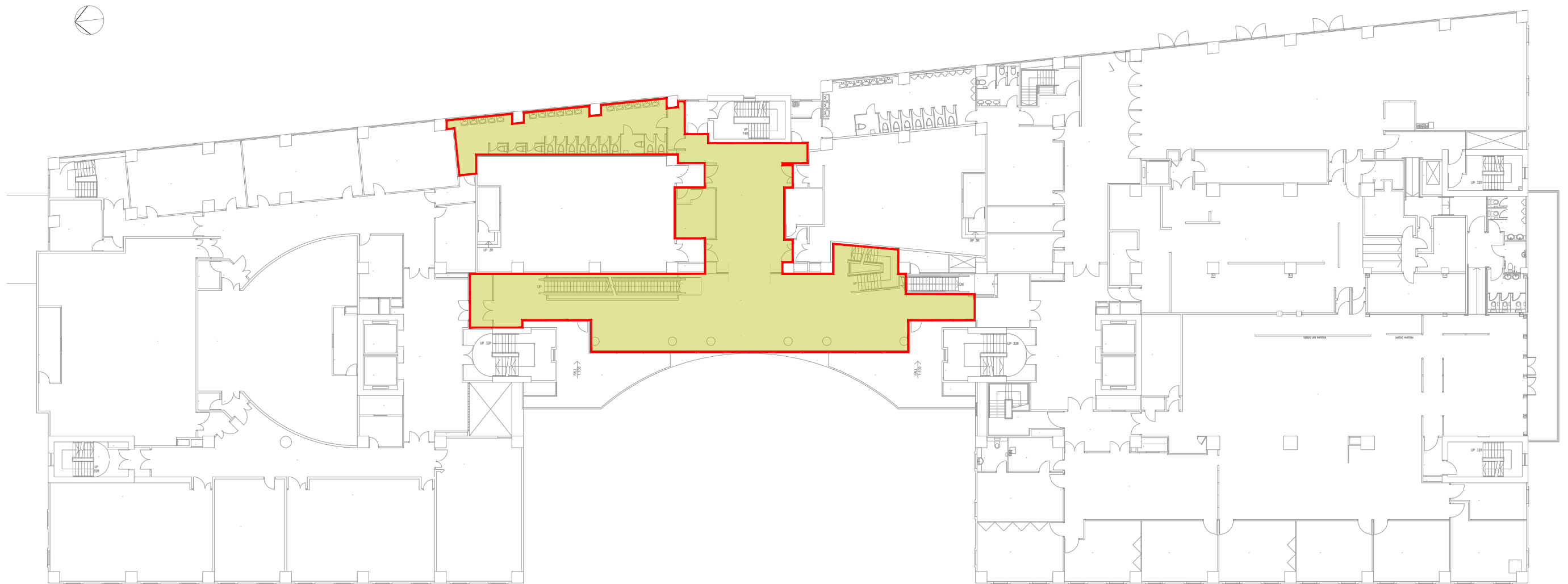
逸夫校園 - 校史展覽廳 (思齊樓二樓及三樓)及浸大橋與逸夫行政樓連接處 (逸夫行政樓四樓及五樓) 翻新工程

FROM 27 APRIL 2026 (MONDAY) TO 31 AUGUST 2026 (MONDAY)
由二零二六年四月二十七號 (星期一) 至 二零二六年八月三十一號 (星期一)

LEGEND (圖例):



AFFECTED AREA (受工程影響範圍)



Level 2 Plan, David C. Lam Building (思齊樓二樓)

Shaw Campus – Renovation Works for History Gallery (Levels 2 and 3 of David C. Lam Building) and Connection of BU Bridge (Levels 4 and 5 of Shaw Tower)

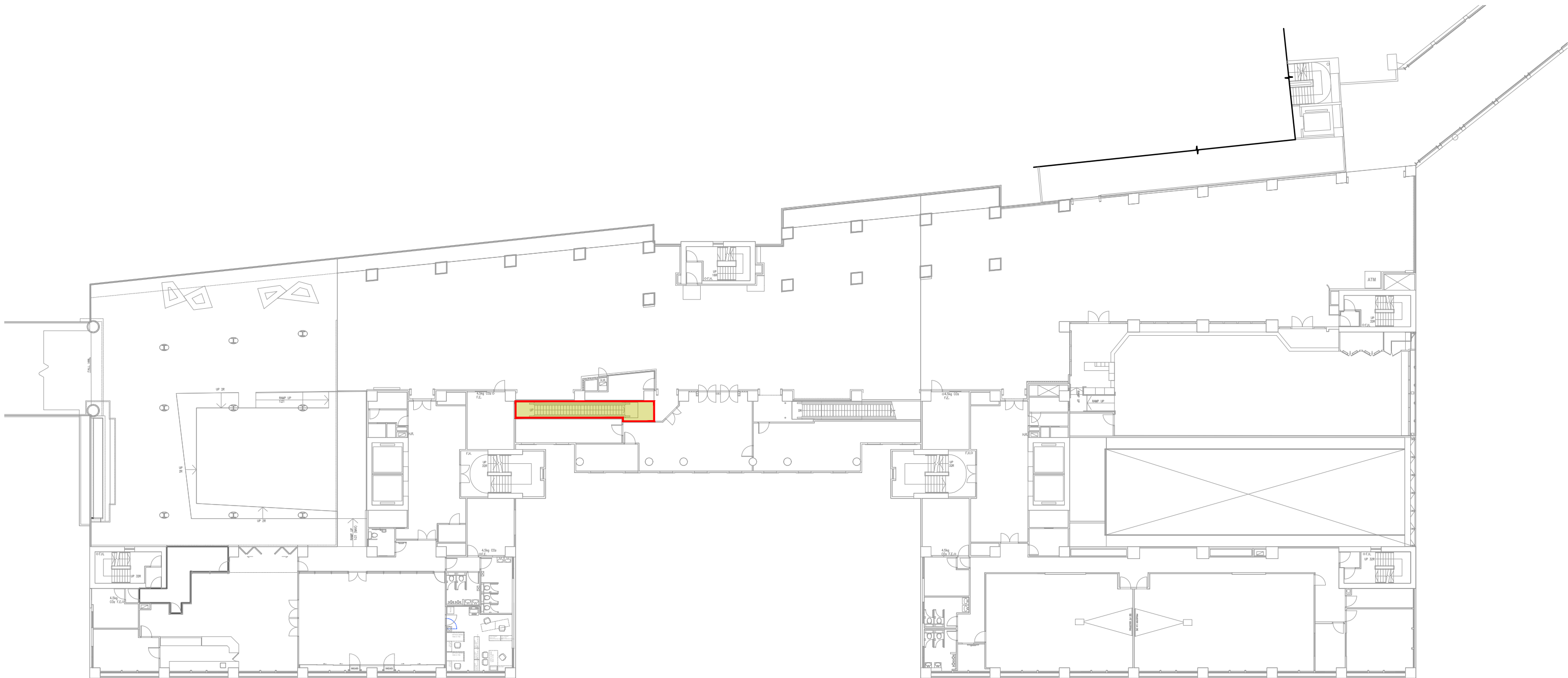
逸夫校園 - 校史展覽廳 (思齊樓二樓及三樓)及浸大橋與逸夫行政樓連接處 (逸夫行政樓四樓及五樓) 翻新工程

FROM 1 APRIL 2026 (WEDNESDAY) TO 31 AUGUST 2026 (MONDAY)
由二零二六年四月一號 (星期三) 至 二零二六年八月三十一號 (星期一)

LEGEND (圖例):



AFFECTED AREA (受工程影響範圍)



Level 3 Plan, David C. Lam Building (思齊樓三樓)

Shaw Campus – Renovation Works for History Gallery (Levels 2 and 3 of David C. Lam Building) and Connection of BU Bridge (Levels 4 and 5 of Shaw Tower)

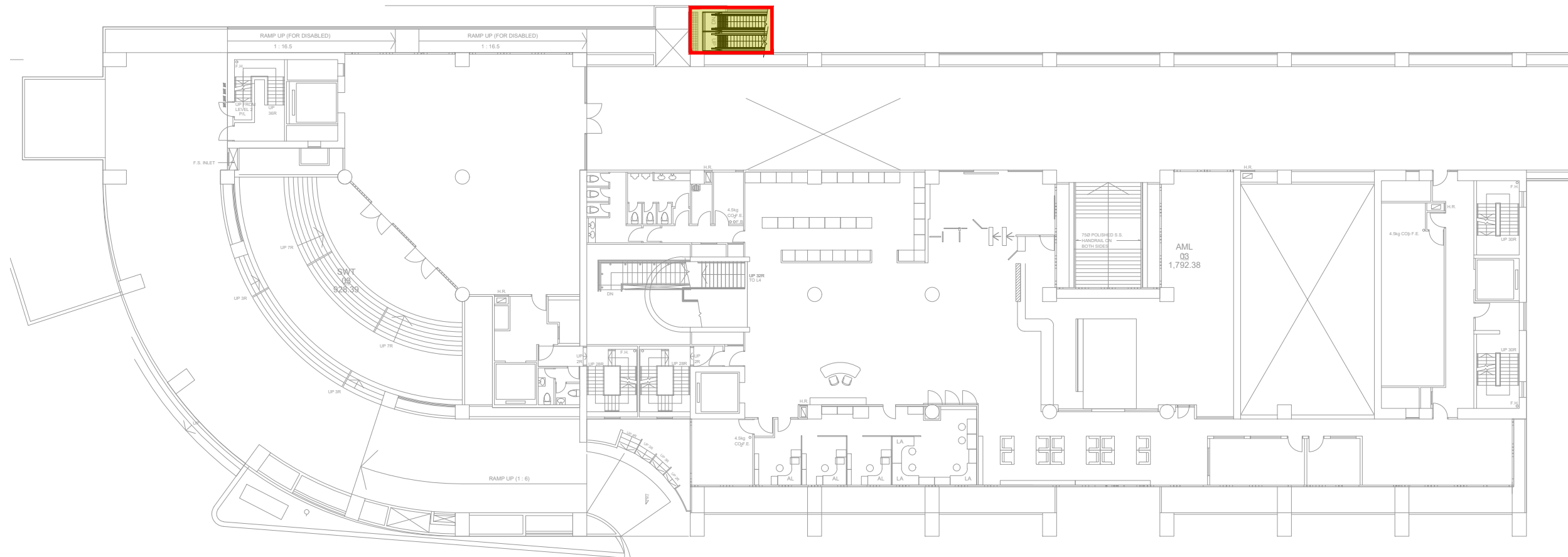
逸夫校園 - 校史展覽廳 (思齊樓二樓及三樓)及浸大橋與逸夫行政樓連接處 (逸夫行政樓四樓及五樓) 翻新工程

FROM 1 APRIL 2026 (WEDNESDAY) TO 31 AUGUST 2026 (MONDAY)
由二零二六年四月一號 (星期三) 至 二零二六年八月三十一號 (星期一)

LEGEND (圖例):



AFFECTED AREA (受工程影響範圍)



Level 3 Plan, Shaw Tower (逸夫行政樓三樓)

Shaw Campus – Renovation Works for History Gallery (Levels 2 and 3 of David C. Lam Building) and Connection of BU Bridge (Levels 4 and 5 of Shaw Tower)

逸夫校園 - 校史展覽廳 (思齊樓二樓及三樓)及浸大橋與逸夫行政樓連接處 (逸夫行政樓四樓及五樓) 翻新工程

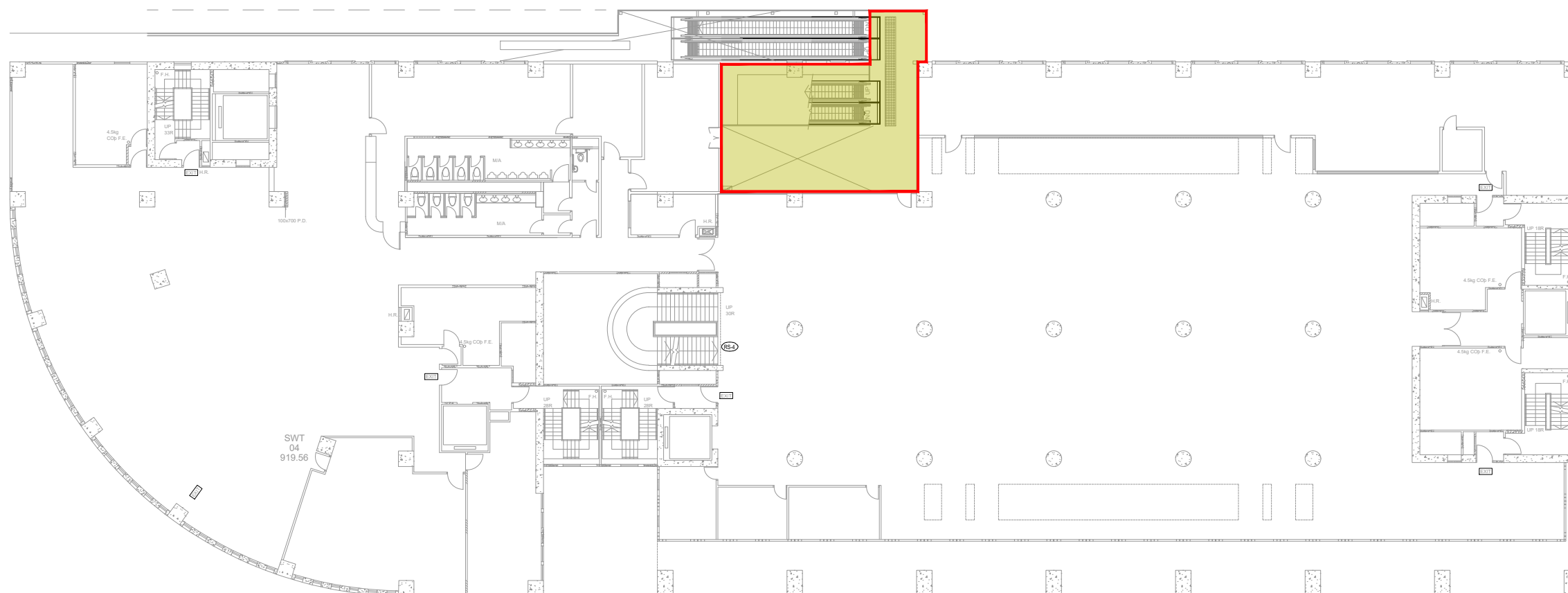
FROM 1 APRIL 2026 (WEDNESDAY) TO 31 AUGUST 2026 (MONDAY)

由二零二六年四月一號 (星期三) 至 二零二六年八月三十一號 (星期一)

LEGEND (圖例):



AFFECTED AREA (受工程影響範圍)



Level 4 Plan, Shaw Tower (逸夫行政樓四樓)

Shaw Campus – Renovation Works for History Gallery (Levels 2 and 3 of David C. Lam Building) and Connection of BU Bridge (Levels 4 and 5 of Shaw Tower)

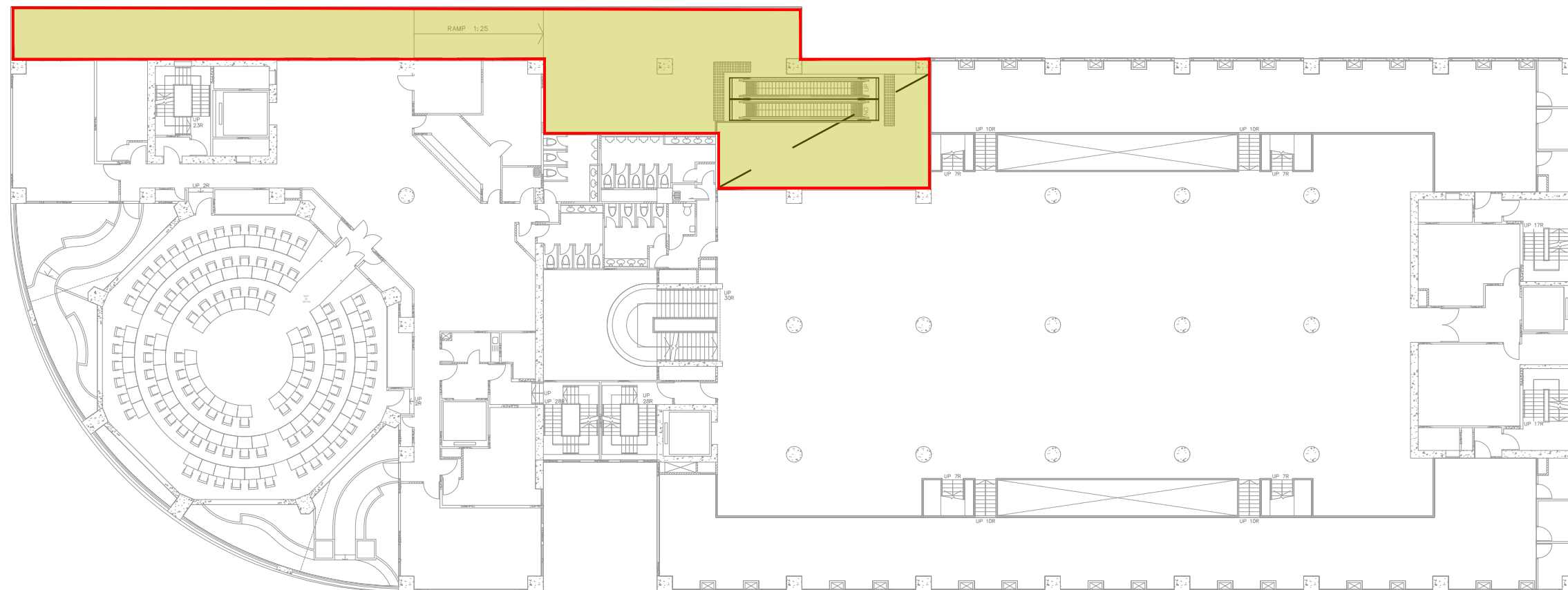
逸夫校園 - 校史展覽廳 (思齊樓二樓及三樓)及浸大橋與逸夫行政樓連接處 (逸夫行政樓四樓及五樓) 翻新工程

FROM 1 APRIL 2026 (WEDNESDAY) TO 31 AUGUST 2026 (MONDAY)
由二零二六年四月一號 (星期三) 至 二零二六年八月三十一號 (星期一)

LEGEND (圖例):



AFFECTED AREA (受工程影響範圍)



Level 5 Plan, Shaw Tower (逸夫行政樓五樓)