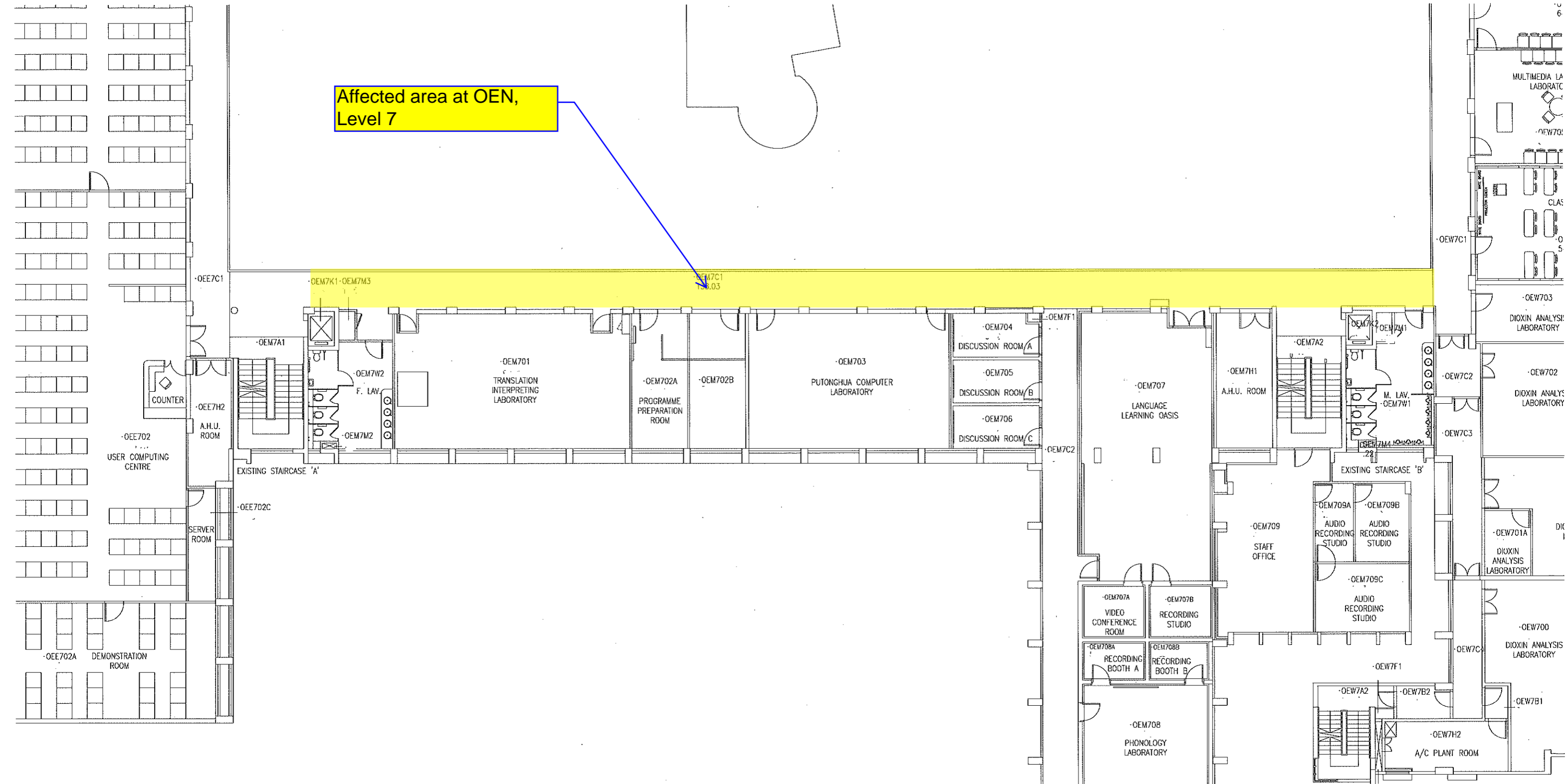


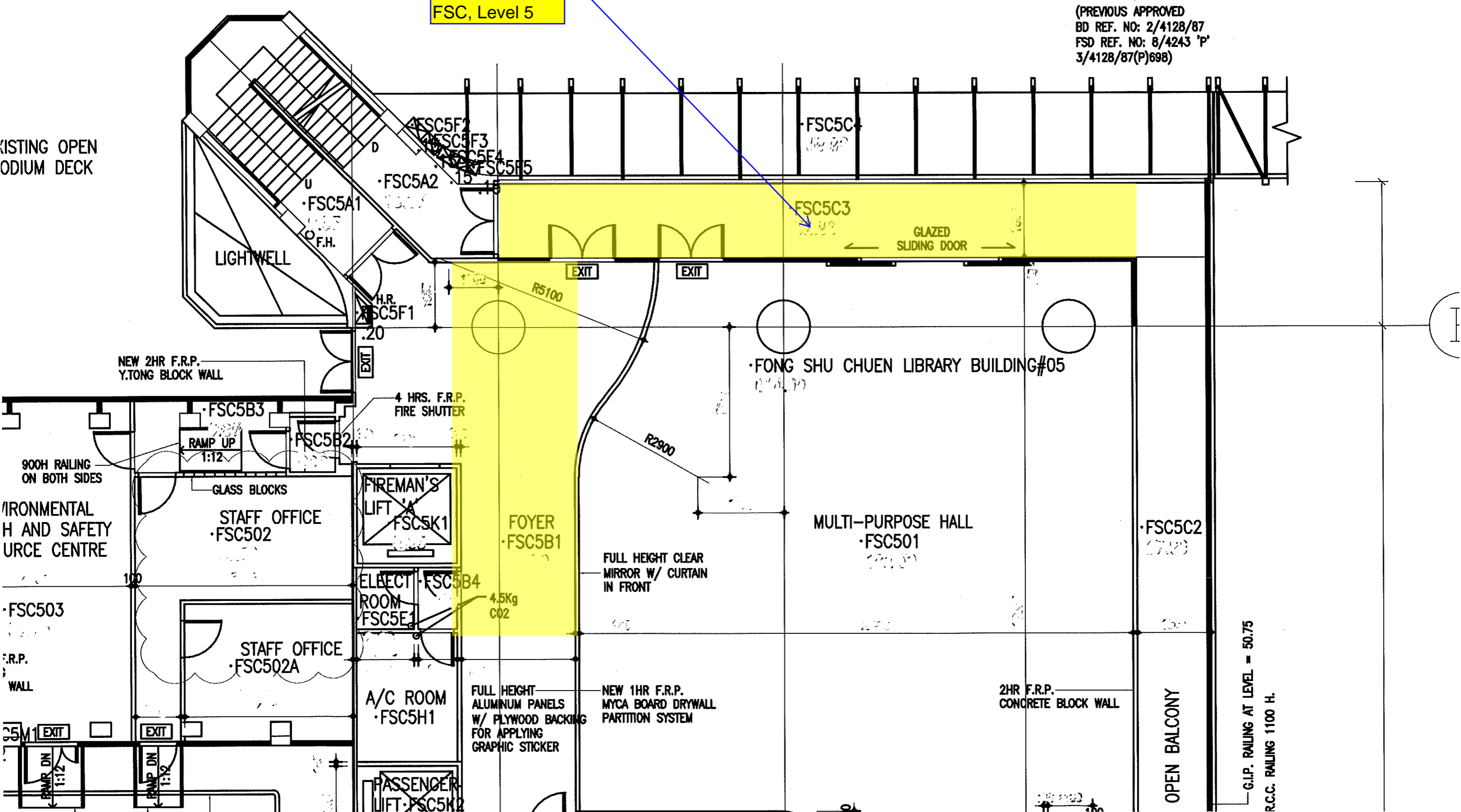
Affected area at OEN,
Level 7



Affected area at FSC, Level 5

(PREVIOUS APPROVED
BD REF. NO: 2/4128/87
FSD REF. NO: 8/4243 'P'
3/4128/87(P)698)

EXISTING OPEN
ODIUM DECK



ENVIRONMENTAL
HEALTH AND SAFETY
RESOURCE CENTRE

FSC503

F.R.P.
WALL

25M

RAMP DN
1:12

RAMP DN
1:12

EXIT

EXIT

NEW 2HR F.R.P.
Y.TONG BLOCK WALL

RAMP UP
1:12

GLASS BLOCKS

STAFF OFFICE
FSC502

100

STAFF OFFICE
FSC502A

EXIT

EXIT

RAMP DN
1:12

RAMP DN
1:12

EXIT

EXIT

LIGHTWELL

F.H.

H.R.

FSC5A1

FSC5A2

FSC5A3

FSC5A4

FSC5A5

FSC5A6

FSC5A7

FSC5A8

FSC5A9

FSC5A10

FSC5A11

FSC5A12

FSC5A13

FSC5A14

FSC5A15

FSC5A16

FSC5A17

FSC5A18

FSC5A19

4 HRS. F.R.P.
FIRE SHUTTER

FIREMAN'S
LIFT
FSC5K1

ELECT.
ROOM
FSC5E1

A/C ROOM
FSC5H1

PASSENGER
LIFT
FSC5K2

FSC5B1

FSC5B2

FSC5B3

FOYER
FSC5B1

FULL HEIGHT
ALUMINUM PANELS
W/ PLYWOOD BACKING
FOR APPLYING
GRAPHIC STICKER

NEW 1HR F.R.P.
MYCA BOARD DRYWALL
PARTITION SYSTEM

FULL HEIGHT CLEAR
MIRROR W/ CURTAIN
IN FRONT

4.5Kg
CO2

R5100

R2900

R2900

R2900

R2900

R2900

R2900

R2900

R2900

R2900

R2900

R2900

R2900

R2900

R2900

R2900

R2900

R2900

R2900

R2900

R2900

R2900

R2900

R2900

EXIT

EXIT

EXIT

EXIT

EXIT

EXIT

EXIT

EXIT

EXIT

EXIT

EXIT

EXIT

EXIT

EXIT

EXIT

EXIT

EXIT

EXIT

EXIT

EXIT

EXIT

EXIT

EXIT

EXIT

R2900

R2900

R2900

R2900

R2900

R2900

R2900

R2900

R2900

R2900

R2900

R2900

R2900

R2900

R2900

R2900

R2900

R2900

FONG SHU CHUEN LIBRARY BUILDING#05

FSC501

FSC502

FSC503

FSC504

FSC505

FSC506

FSC507

FSC508

FSC509

FSC510

FSC511

FSC512

FSC513

FSC514

FSC515

FSC516

FSC517

FSC518

FSC519

FSC520

FSC5C1

FSC5C2

FSC5C3

FSC5C4

FSC5C5

FSC5C6

FSC5C7

FSC5C8

FSC5C9

FSC5C10

FSC5C11

FSC5C12

FSC5C13

FSC5C14

FSC5C15

FSC5C16

FSC5C17

FSC5C18

FSC5C19

FSC5C20

FSC5C21

FSC5C22

FSC5C23

FSC5C24

FSC5C25

FSC5C26

FSC5C27

FSC5C28

FSC5C29

FSC5C30

GLAZED
SLIDING DOOR

2HR F.R.P.
CONCRETE BLOCK WALL

OPEN BALCONY

G.I.P. RAILING AT LEVEL = 50.75

R.C.C. RAILING 1100 H.

Affected area at
SWT, Level 2

