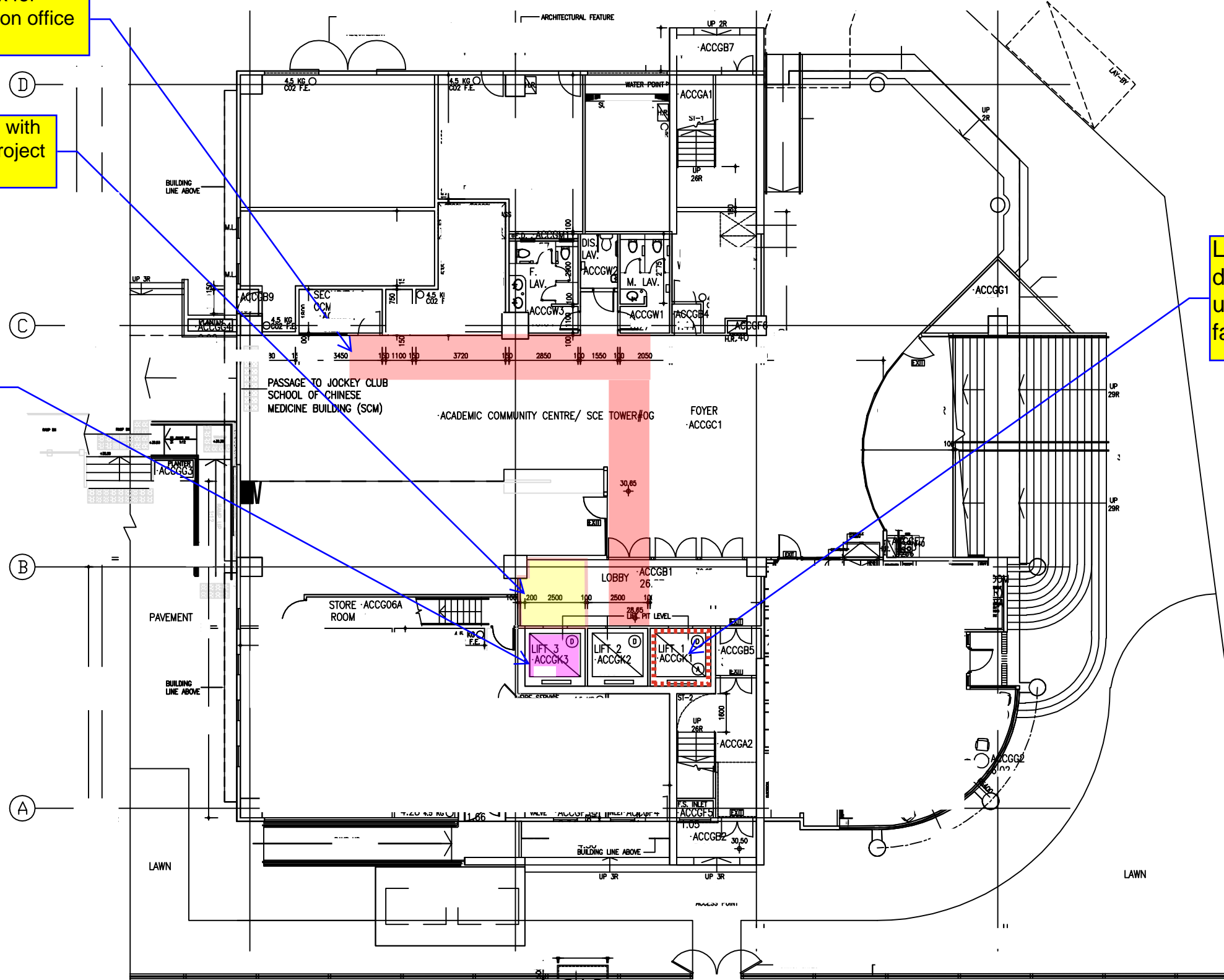


Ceiling work for cabling in non office hours

Working area with hoarding in project period

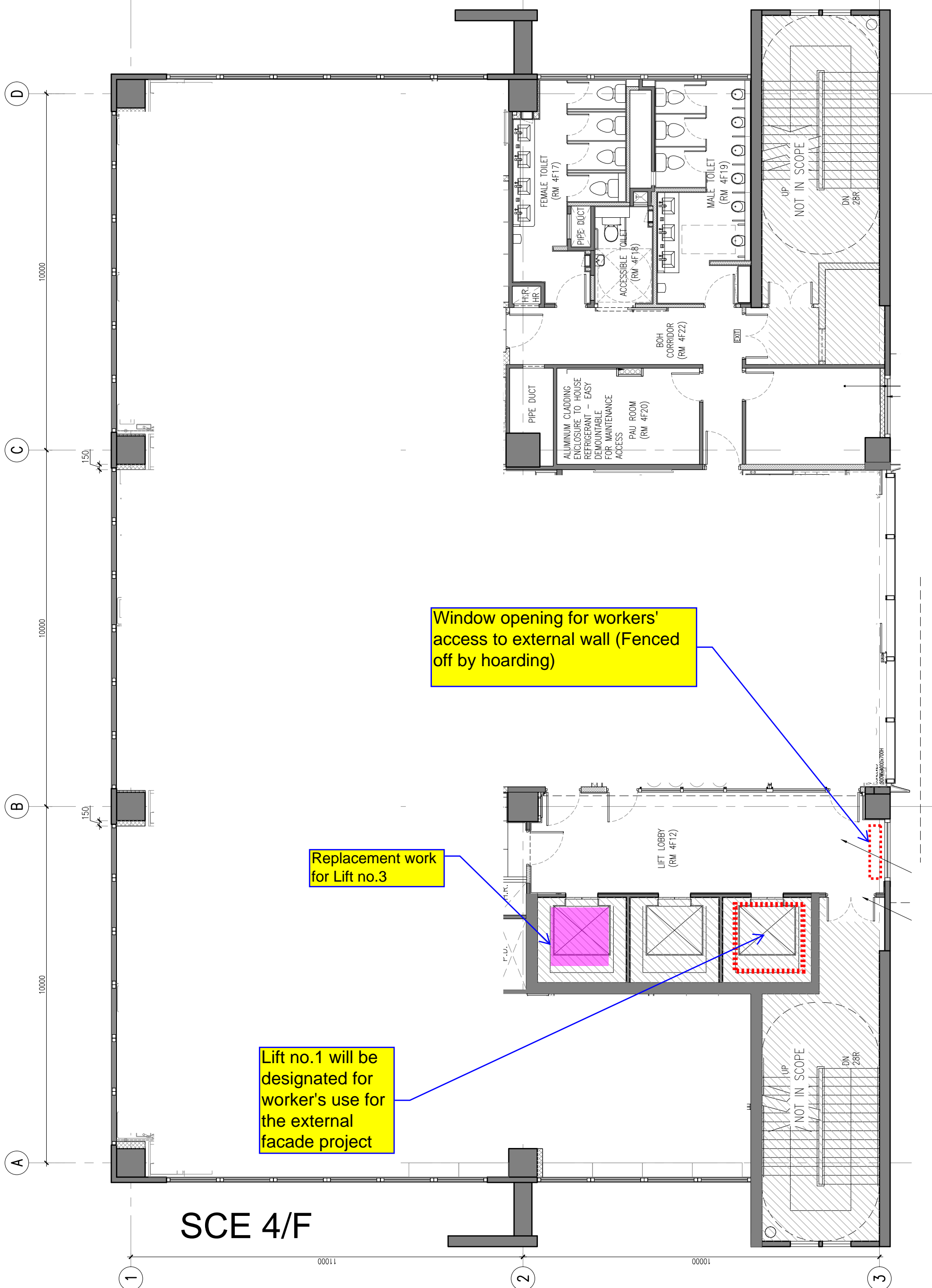
Replacement work for Lift no.3

Lift no.1 will be designated for worker's use for the external facade project



SCE G/F WATER METER METAL CABINET (2000W. x 180"H. x 500D. METAL) 180° SWING HINGE DOORS

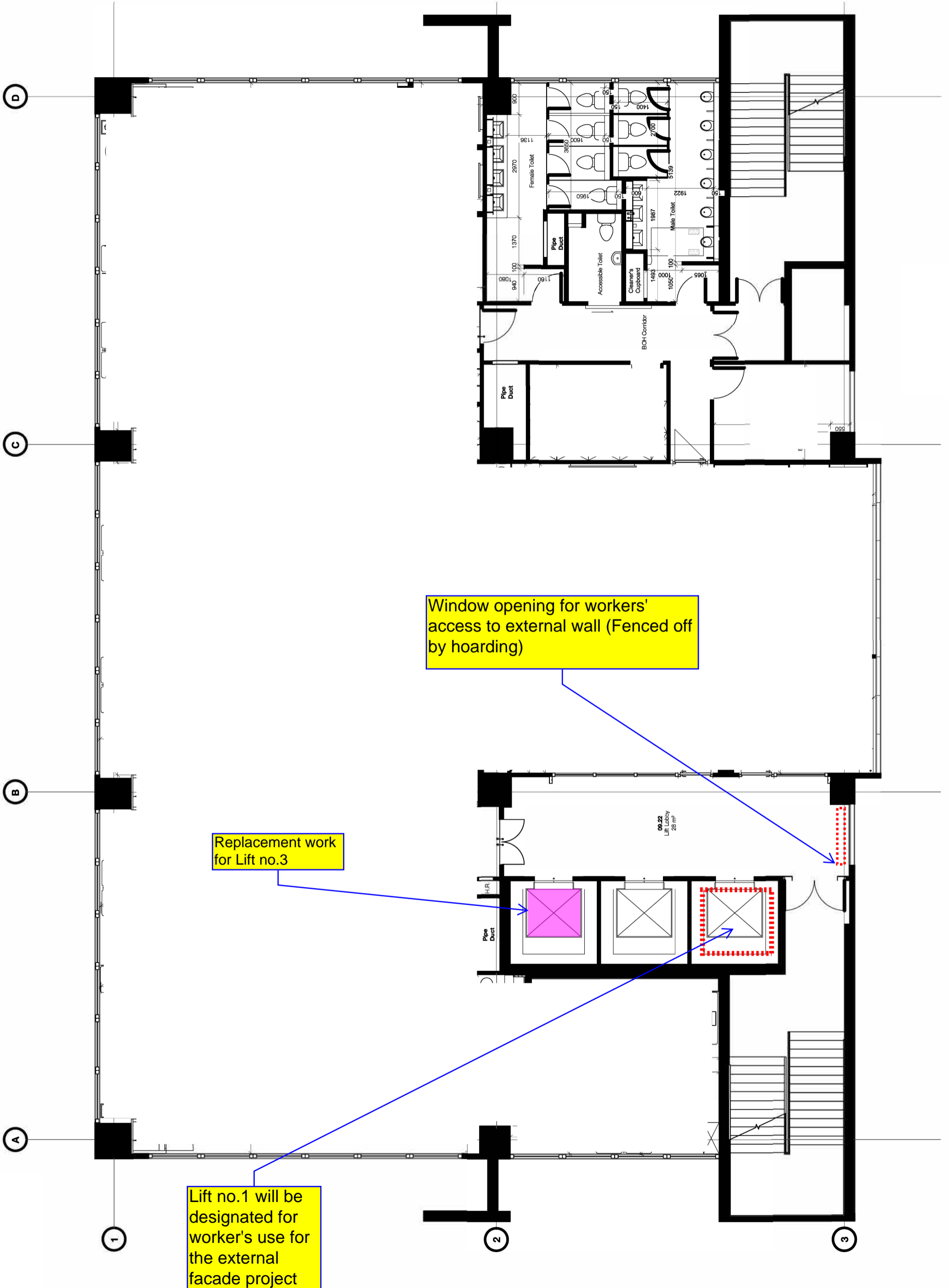
# SCE 4/F



Window opening for workers' access to external wall (Fenced off by hoarding)

Replacement work for Lift no.3

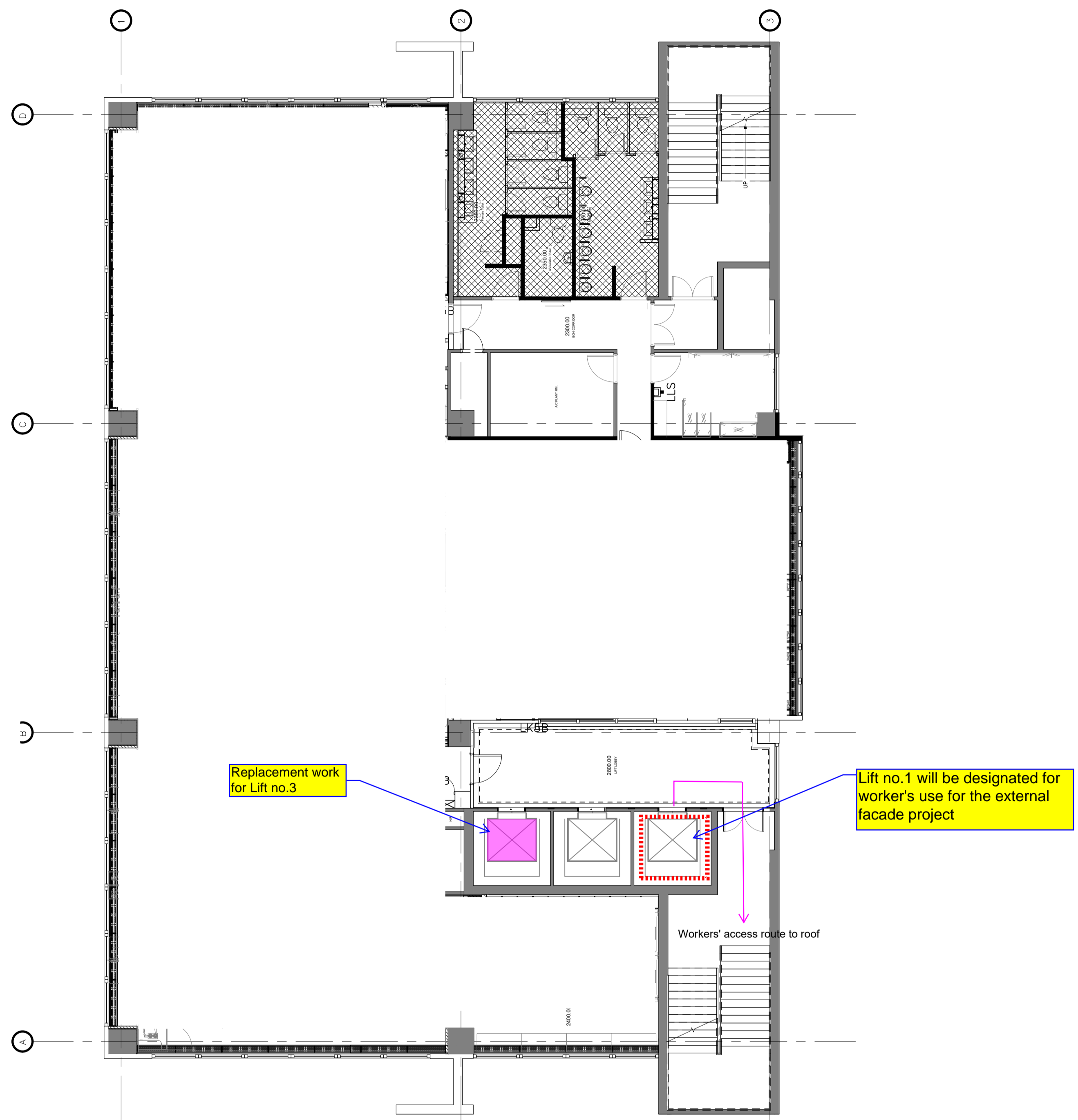
Lift no.1 will be designated for worker's use for the external facade project



Window opening for workers' access to external wall (Fenced off by hoarding)

Replacement work for Lift no.3

Lift no.1 will be designated for worker's use for the external facade project



Replacement work for Lift no.3

Lift no.1 will be designated for worker's use for the external facade project

Workers' access route to roof

SCE 12/F